

Housing Options for the PIP

General Description

MPL offers various rugged and flexible housing options for its embedded computers to give customers the best possible solution for their specific application. All housings can be adapted according to the customer requirements.

Customer can choose

- Use MPL's standard industrial proven, rugged housing, either with DIN-rail, or flange mount option. Various heights are offered to create the most compact system according to your I/O requirements. OEM versions are readily available with customer logo and colors.
- For the harshest environments use our fully IP67 protected military or outdoor housing. Feel free to select the required interface and external connectors according to your requirements and standards. The housings can be adapted according to the customer requirements.
- Design your own housing/chassis and integrate our reliable MPL embedded computer board, which is delivered on an aluminum cooling plate that offers the best conductive cooling concept.

All housings are chromated to provide best EMI protection. Each chassis is external powder coated to provide a more industrial and long lasting exterior finish.

Colors

Standard color for the PIP housing:

- MPL blue (RAL 5024)
- Anthracite gray (RAL 7016)

In case of special needs any RAL color can be used for your OEM case. The MIL Outdoor housing comes in Jet Black (RAL 9005) but other RAL colors are possible as well.



Standard housing with different heights

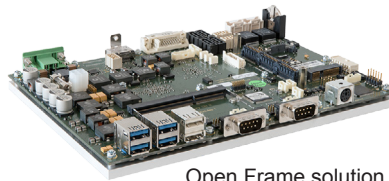
Custom solution



OEM solution



2U 19" rack mount



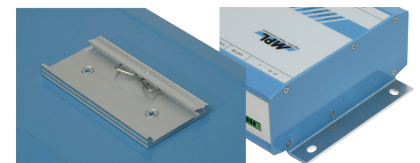
Open Frame solution



Custom solution with PCI extension and WLAN



MIL housing solution IP67



DIN-Rail & Flange mounting

PIP Housings

Version	Size mm	Case characteristics
Standard	footprint: 270 x 162 heights: 62 / 83 / 120	robust rugged aluminum int. chromated, ext. powder coated
OEM standard	footprint: 270 x 162 heights: 62 / 83 / 120 special height possible	with own look (color & foil) special front plate engraving possible
MIL / Outdoor	adjusted acc. needs footprint: 304 x 234 height: min. 75	for harshest environment up to IP67 protected connectors acc. requirement
Open Frame	adjusted acc. needs footprint: min. 264 x 164 height: min. 43	mounted on cooling plate adaptable to customer case with passive cooling concept
19" rack	2U, 3U, and 6U 19" slot solution	

MPL AG is an ISO9001 certified company



Web: www.mpl.ch
Email: info@mpl.ch

MPL AG, Täfernstrasse 20, CH-5405 Dättwil
Phone +41 56 483 34 34 Switzerland

